



**India Meteorological Department
(Ministry of Earth Sciences)**

NATIONAL BULLETIN NO. 14 (BOB/06/2024)

TIME OF ISSUE:0920 HOURS IST

DATED: 24.10.2024

FROM: INDIA METEOROLOGICAL DEPARTMENT (FAX NO. 24643965/24699216/24623220)

**TO: CONTROL ROOM, NDM, MINISTRY OF HOME AFFAIRS (FAX.NO. 23093750)
CONTROL ROOM NDMA (FAX.NO. 26701729)
CABINET SECRETARIAT (FAX.NO.23012284, 23018638)
PS TO HON'BLE MINISTER FOR S & T AND EARTH SCIENCES (FAX NO.23316745)
SECRETARY, MOES (FAX NO. 24629777)
H.Q. (INTEGRATED DEFENCE STAFF AND CDS) (FAX NO. 23005137/23005147)
DIRECTOR GENERAL, DOORDARSHAN (23385843)
DIRECTOR GENERAL, AIR (23421105, 23421219)
PIB MOES (FAX NO. 23389042)
UNI (FAX NO. 23355841)
D.G. NATIONAL DISASTER RESPONSE FORCE (NDRF) (FAX NO. 26105912, 2436 3260)
DIRECTOR, PUNCTUALITY, INDIAN RAILWAYS (FAX NO. 23388503)
CHIEF SECRETARY, ODISHA (FAX NO. 0674-2536660)
CHIEF SECRETARY, WEST BENGAL (FAX NO. 033-22144328)
CHIEF SECRETARY, ANDAMAN & NICOBAR ISLANDS (FAX NO. 03192-232656)
CHIEF SECRETARY, TAMIL NADU (FAX NO. 044-25672304)
CHIEF SECRETARY, ANDHRA PRADESH (FAX NO. 0863-2441029)
CHIEF SECRETARY, PUDUCHERRY (FAX NO. 0413-2334145)**

**Subject: Severe Cyclonic storm "DANA" over northwest & adjoining central Bay of Bengal
(Cyclone Warning for Odisha and West Bengal coasts: **Red Message**)**

The severe cyclonic storm "DANA" (pronounced as Dana) over central & adjoining northwest Bay of Bengal moved north-northwestwards with a speed of 12 kmph during past 6 hours, and lay centred at 0530 hrs IST of today, the 24th October, over northwest & adjoining central Bay of Bengal, near latitude 18.5° N and longitude 88.2°E, about 260 km southeast of Paradip (Odisha), 290 km south-southeast of Dhamara (Odisha) and 350 km south of Sagar Island (West Bengal).

It is very likely to move northwestwards and cross north Odisha and West Bengal coasts between Puri and Sagar Island close to Bhitarkanika and Dhamara (Odisha) during mid-night of 24th to morning of 25th October, 2024 as a severe Cyclonic Storm with a wind speed of 100-110 kmph gusting 120 kmph.

The system is under continuous surveillance of the Doppler Weather Radar at Paradip.

Forecast track and intensity are given in the following table:

Date/Time (IST)	Position (Lat. °N/ Long. °E)	Maximum Sustained Surface Wind Speed (Kmph)	Category Of Cyclonic Disturbance
24.10.24/0530	18.5/88.2	95-105 gusting to 115	Severe Cyclonic Storm
24.10.24/1130	19.2/87.9	100-110 gusting to 120	Severe Cyclonic Storm
24.10.24/1730	19.9/87.6	105-115 gusting to 125	Severe Cyclonic Storm
24.10.24/2330	20.4/87.4	100-110 gusting to 120	Severe Cyclonic Storm
25.10.24/0530	20.8/87.0	100-110 gusting to 120	Severe Cyclonic Storm
25.10.24/1730	21.1/86.2	70-80 gusting to 90	Cyclonic Storm
26.10.24/0530	21.2/85.3	30-40 gusting to 50	Depression

(i) Rainfall Warning:

- ❖ Light to moderate rainfall at most places with **heavy to very heavy rainfall** at a few places and **extremely heavy rainfall (≥ 21 cm)** at isolated places over **Baleswar, Mayurbhanj, Bhadrak, Kendrapara, Jagatsingpur Kendujhar, Jajpur, Cuttack and Dhenkanal, Khorda and Puri** districts of Odisha on 24th & 25th October.
- ❖ **Light to moderate rainfall at most places with heavy to very heavy rainfall** at a few places with **extremely heavy rainfall** at isolated places over **South & North 24 Parganas, East & West Medinipur, Jhargram, Howrah, Hooghly, Kolkata and Bankura** districts of Gangetic West Bengal on 24th & 25th October.
- ❖ Light to moderate rainfall at most places is likely over south Jharkhand with **heavy rainfall** at isolated places on 24th and **heavy to very heavy rainfall** at isolated places on 25th October.

(ii) Wind Warning:

Eastcentral Bay of Bengal: Gale wind speed reaching 95-105 kmph gusting to 115 kmph is prevailing and likely to continue till 24th Oct afternoon. It is likely to decrease gradually thereafter.

Adjoining areas of Westcentral Bay of Bengal: Gale wind speed reaching 95-105 kmph gusting to 115 kmph is prevailing and likely to continue till 24th Oct afternoon. It is likely to decrease gradually thereafter.

Northwest Bay of Bengal: Gale wind speed reaching 95-105 kmph gusting to 115 kmph is prevailing. It is likely to increase gradually becoming 105-115 kmph gusting to 125 kmph by 24th Oct evening.

Along & off Odisha-west Bengal coasts: Gale wind speed reaching 60-70 kmph gusting to 80 kmph is prevailing. It would gradually increase becoming 100-110 kmph gusting to 120 kmph along & off north Odisha and east Medinipur district of West Bengal from 24th afternoon till morning of 25th October and decrease gradually thereafter.

Gale wind speed reaching 60-80 kmph gusting to 90 kmph is likely along & off south Odisha and remaining districts of coastal West Bengal from 24th evening till 25th Oct morning and decrease gradually thereafter.

Adjoining areas of northeast Bay of Bengal: Squally wind speed reaching 50-60 kmph gusting to 70 kmph is likely to prevail till 25th morning and decrease gradually thereafter.

South Jharkhand: Squally wind speed reaching 40-50 gusting to 60 kmph is very likely to prevail from morning of 25th till evening of 26th October.

(iii) Storm surge warning:

Storm surge of 1.0 to 2.0 m height above astronomical tide is very likely to inundate low lying areas of Kendrapara, Bhadrak & Balasore districts of Odisha and East Medinipur districts of West Bengal during the time of landfall.

Storm surge of 0.5 to 1.0 m height above astronomical tide is very likely to inundate low lying areas of South 24-Parganas district of West Bengal and Jagatsinghpur district of Odisha during the time of landfall.

(iv) Sea Condition:

Eastcentral Bay of Bengal: Sea condition is likely to be **high to very high till 24th October evening** and improve gradually thereafter.

Adjoining areas of Westcentral Bay of Bengal: Sea condition is likely to be **high to very high till 24th October evening**. It is likely to improve gradually thereafter.

Northwest Bay of Bengal: Sea condition is likely to be **High to Very High till 25th morning** and improve gradually thereafter.

Adjoining areas of northeast Bay of Bengal: Sea condition is likely to be **Rough to Very Rough till 25th morning** and improve gradually thereafter.

Along & off Odisha-west Bengal coasts: **High to Very High till 25th Oct forenoon** and improve gradually thereafter.

(v) Fishermen Warning:

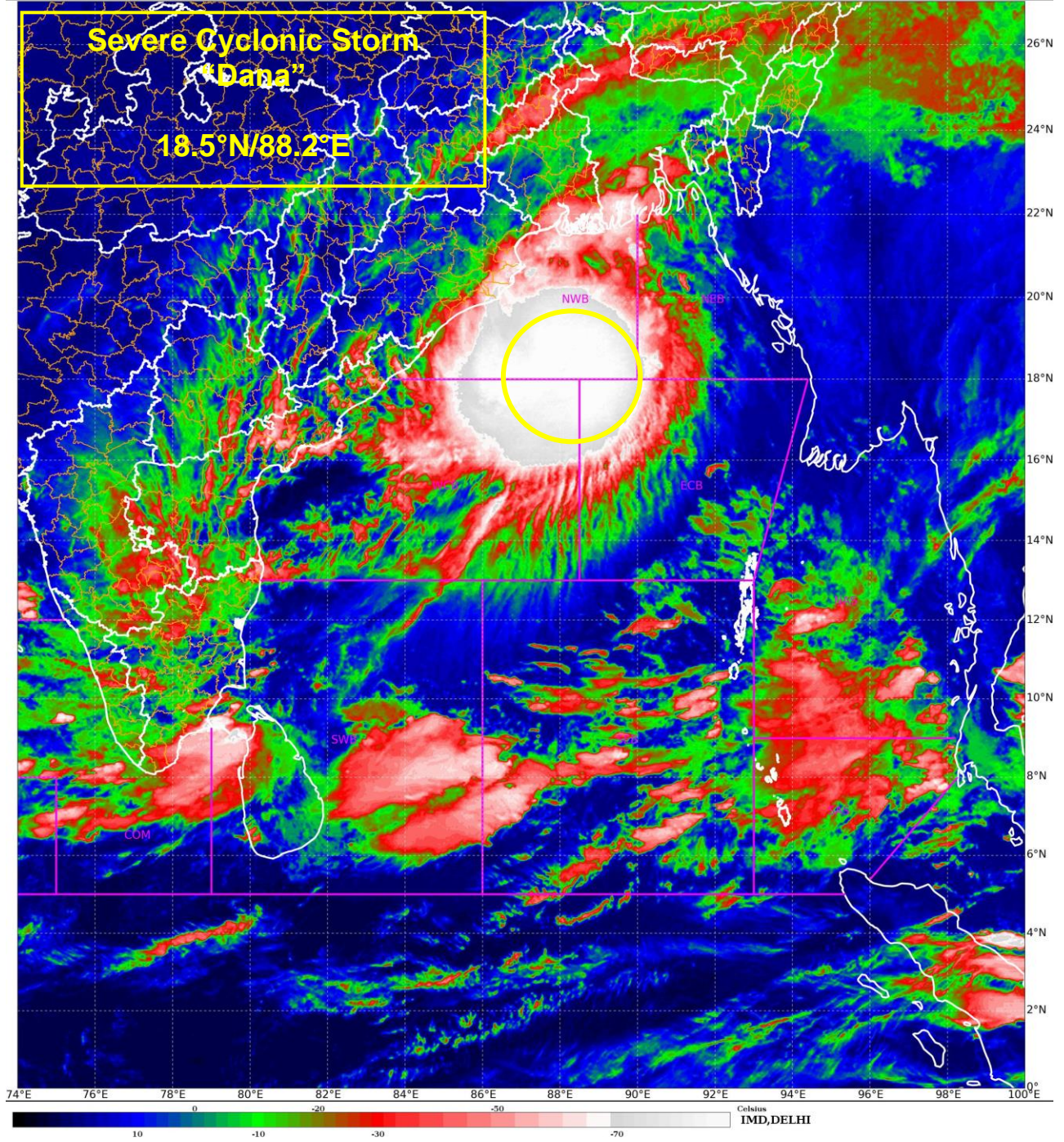
- Total suspension of fishing operations on 24th & 25th Oct over Central and North Bay of Bengal.
- Fishermen are advised not to venture into
 - Eastcentral Bay of Bengal on 24th October.
 - **Adjoining areas of Westcentral Bay of Bengal** on 24th Oct.
 - **Northwest & adjoining northeast Bay of Bengal and along & off Odisha, West Bengal and Bangladesh coasts till 25th October.**
- ❖ **Impact Expected over districts of Odisha (Baleswar, Bhadrak, Kendrapara, Jajpur, Jagatsinghpur, Puri, Khorda, Mayurbhanj, Kendujhar, Cuttack, Dhenkanal) and West Bengal (East & West Medinipur, South & North 24 Parganas, Jhargram, Howrah, Hooghly, Kolkata, & Bankura)**
- Major damage to thatched houses/ huts. Roof tops may blow off. Unattached metal sheets may fly.
- Breaking of tree branches and uprooting of trees. Large dead limbs blown from trees.
- Damage to power and communication lines.
- Major damage to Kutchha and some damage to Pucca roads. Flooding of escape routes.
- Damage to vulnerable structure.
- Major damage to standing crops including banana, papaya, horticultural and vegetable crops due to inundation and wind.
- Damage to embankments/ salt pans.
- Localized Flooding of roads, water logging in low lying areas and closure of underpasses mainly in urban areas of the above region.
- Occasional reduction in visibility due to heavy rainfall.

- Disruption of traffic in major cities and roadways due to water logging in roads and poor visibility due to heavy rain leading to increased travel time and incidents
- Localized Landslides/Mudslides/landslips/mud slips/land sinks/mud sinks.
- Likely disruption of marine and inland water transportation like small boats and trawlers.
- It may lead to riverine flooding in some river catchments (for riverine flooding please visit Webpage of Central Water Commission)
- ❖ **Action Suggested for districts of Odisha (Baleswar, Bhadrak, Kendrapara, Jajpur, Jagatsinghpur, Puri, Khorda, Mayurbhanj, Kendujhar, Cuttack, Dhenkanal) and West Bengal (South & North 24 Parganas, East & West Medinipur, Jhargram, Howrah, Hooghly, Kolkata & Bankura)**
- Total suspension of fishing operations during 24th to 25th Oct over Central and North Bay of Bengal.
- Fishermen are advised not to venture into
 - ✓ Eastcentral Bay of Bengal on 24th October.
 - ✓ **Adjoining areas of Westcentral Bay of Bengal** on 24th Oct.
 - ✓ **Northwest and adjoining northeast Bay of Bengal and along & off Odisha, West Bengal and Bangladesh coasts** on 24th & 25th October morning.
- Movement in motor boats unsafe
- Coastal hutment dwellers to be moved to safer places.
- People in affected areas to remain indoors.
- Judicious regulation of onshore/offshore, Port and maritime activities including shipping.
- Judicious regulation of tourism activities in coastal areas.
- Judicious regulation of surface transports including railways and roadways.
- Check for traffic congestion on your route before leaving for your destination.
- Follow any traffic advisories that are issued in this regard.
- Avoid going to areas that face the water logging problems often.
- Avoid staying in vulnerable structure.

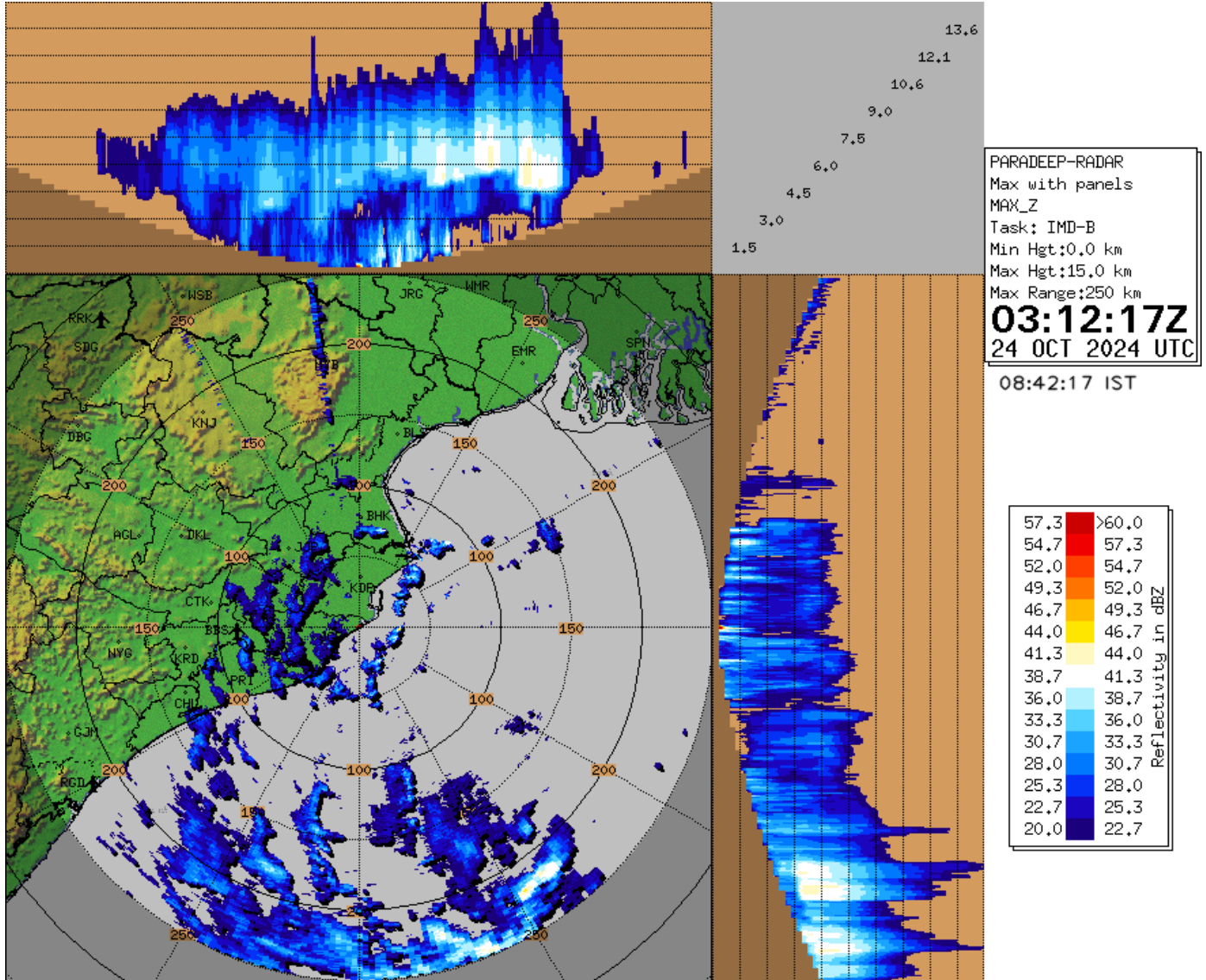
Next bulletin will be issued at 1200 hours IST of today, the 24th October, 2024.

(Dr. Shashi Kant)
Scientist-D, RSMC & IMD, New Delhi

Copy to: ACWC Kolkata/ACWC Chennai/CWC Bhubaneswar/CWC Vishakhapatnam/Meteorological Centre Port Blair

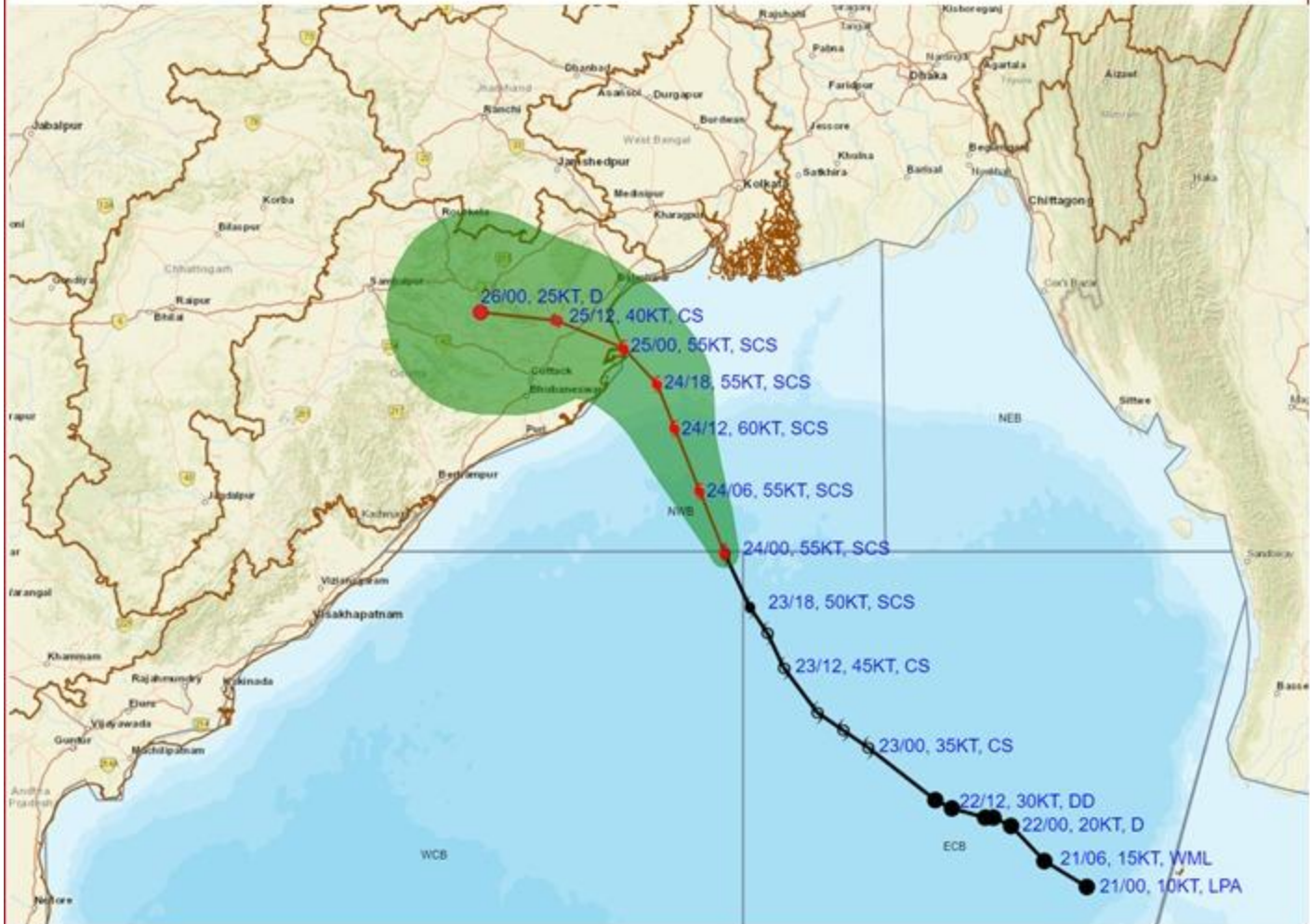


Radar Image of Paradip at 0842 hrs IST 24th Oct 2024





OBSERVED AND FORECAST TRACK ALONGWITH CONE OF UNCERTAINTY OF CYCLONIC STORM 'DANA' OVER NORTHWEST AND ADJOINING CENTRAL BAY OF BENGAL BASED ON 0000 UTC (0530 Hrs. IST) OF 24th OCTOBER 2024



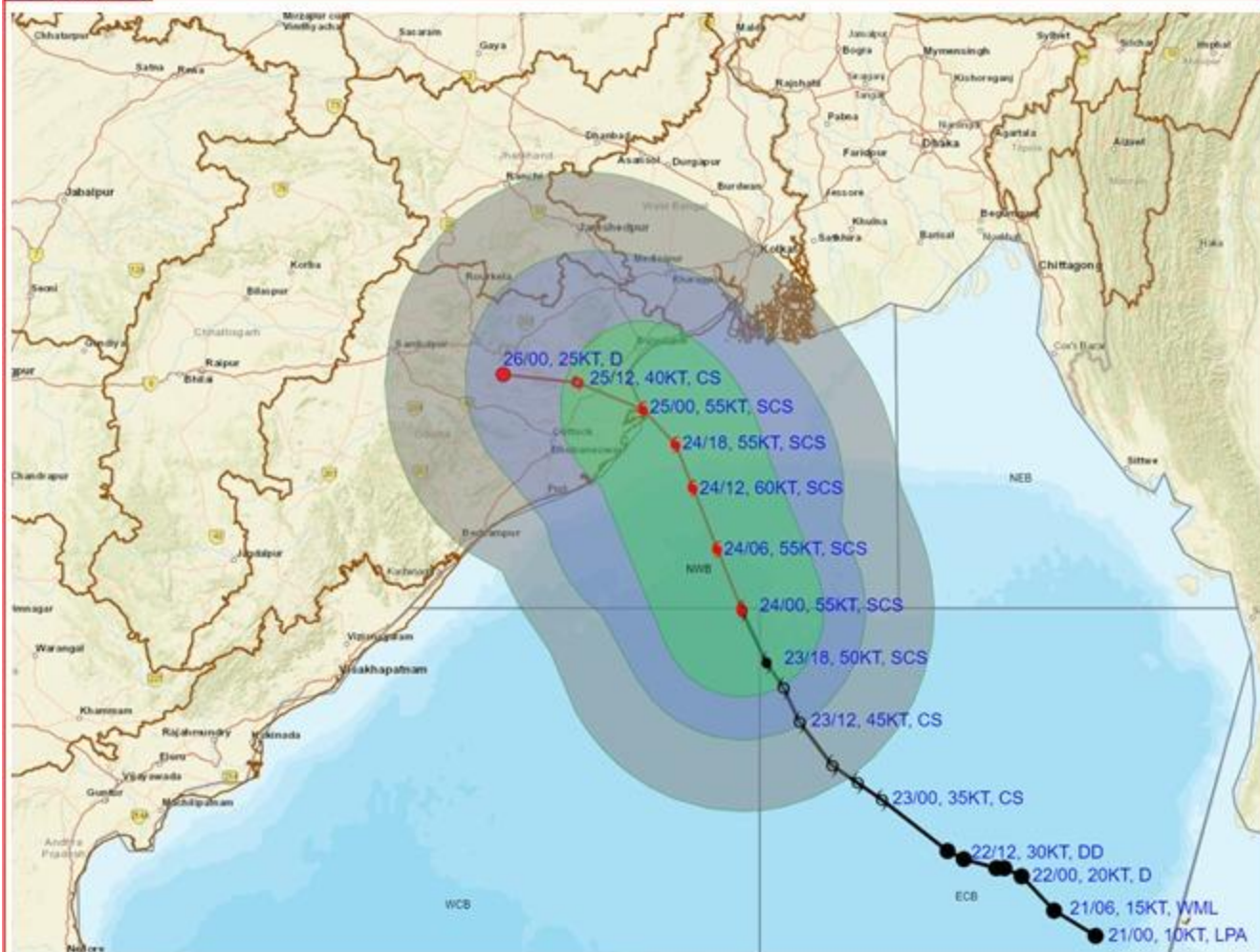
DATE/TIME : IN UTC
 IST : UTC + 0530
 KT : NAUTICAL MILE S/HOUR = 1.85 KM/HOUR
 LPA : LOW PRESSURE AREA
 WML : WELL MARKED LOW PRESSURE AREA
 D : DEPRESSION (17-27 KT)
 DD : DEEP DEPRESSION (28-33 KT)
 CS : CYCLONIC STORM (34-47 KT)
 SCS : SEVERE CYCLONIC STORM (48-63 KT)
 VSCS : VERY SEVERE CYCLONIC STORM (64-89 KT)
 ESCS : EXTREMELY SEVERE CYCLONIC STORM (90-119 KT)
 SuCS : SUPER CYCLONIC STORM (≥120 KT)

● LESS THAN 34 KT
 ○ 34-47 KT
 ○ ≥ 48 KT
 — OBSERVED TRACK
 — FORECAST TRACK
 ▲ CONE OF UNCERTAINTY

Forecast	DISTANCE (KM) AND DIRECTION FROM STATIONS		
Date and Time (UTC)	PARADIP (CWR)	DHAMARA	SAGAR ISLAND
24.10.24/0000	260, SE	290, SSE	350, S
25.10.24/0000	70, NNE	20, E	150, SW
26.10.24/0000	180, NW	180, WNW	290, W



OBSERVED AND FORECAST TRACK ALONGWITH QUADRANT WIND DISTRIBUTION OF CYCLONIC STORM 'DANA' OVER NORTHWEST AND ADJOINING CENTRAL BAY OF BENGAL BASED ON 0000 UTC (0530 Hrs. IST) OF 24th OCTOBER 2024

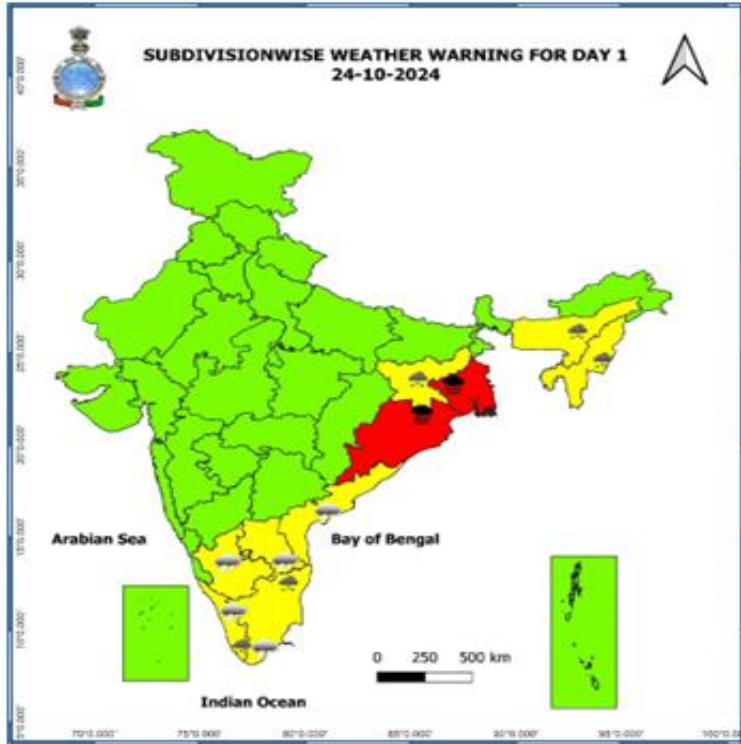


DATE/TIME : IN UTC
 IST : UTC + 0530
 KT : NAUTICAL MILE/SHOUR = 1.85 KM/HOUR
 LPA : LOW PRESSURE AREA
 WML : WELL MARKED LOW PRESSURE AREA
 D : DEPRESSION (17-27 KT)
 DD : DEEP DEPRESSION (28-33 KT)
 CS : CYCLONIC STORM (34-47 KT)
 SCS : SEVERE CYCLONIC STORM (48-63 KT)
 VSCS : VERY SEVERE CYCLONIC STORM (64-89 KT)
 ESCS : EXTREMELY SEVERE CYCLONIC STORM (90-119 KT)
 SuCS : SUPER CYCLONIC STORM (≥120 KT)

● LESS THAN 34 KT
 ○ 34-47 KT
 ● ≥ 48 KT
 — OBSERVED TRACK
 — FORECAST TRACK
 — CONE OF UNCERTAINTY
 AREA OF MAXIMUM SUSTAINED WIND SPEED:
 ■ 28-33 KT (52-61 KMPH)
 ■ 34-49 KT (62-91 KMPH)
 ■ 50-63 KT (92-117 KMPH)
 ■ ≥ 64 KT (≥118 KMPH)

IMPACT OVER THE SEA

MSW (knot/kmph)	Impact	Action
28-33 (52-61)	Very rough seas	Total suspension of fishing operations
34-49 (62-91)	High to very high seas	Total suspension of fishing operations
50-63 (92-117)	Very high seas	Total suspension of fishing operations
≥ 64 (≥118)	Phenomenal	Total suspension of fishing operations



Heavy Rain

Very Heavy Rain

Extremely Heavy Rain

COLOUR CODED WARNING

No Warning (No Action)

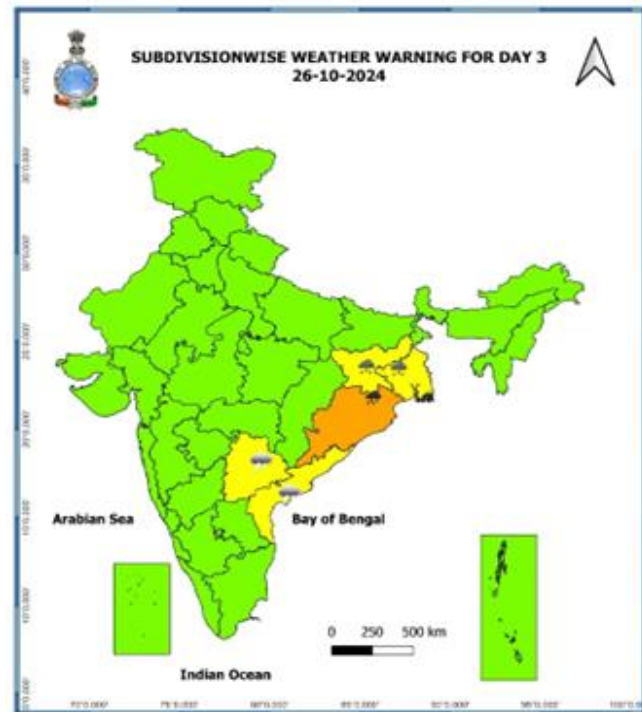
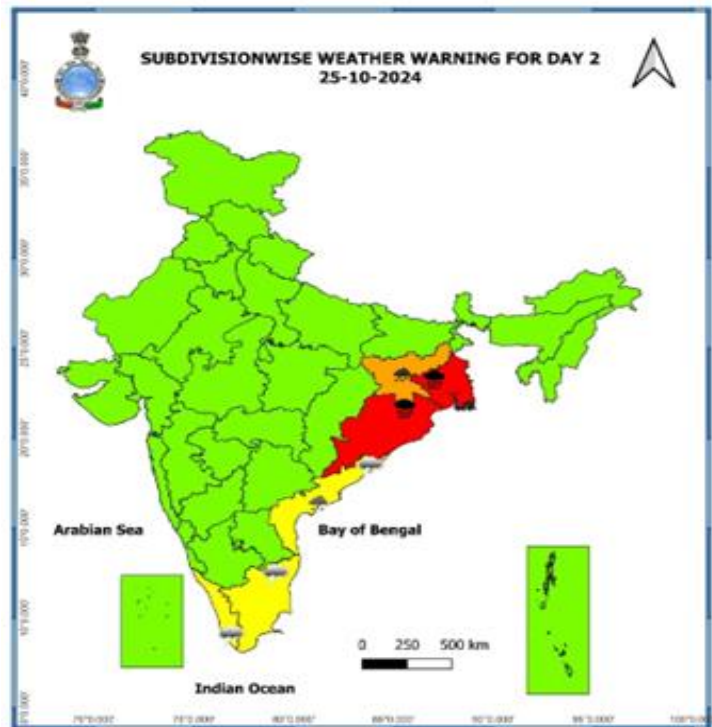
Watch (Be Aware)

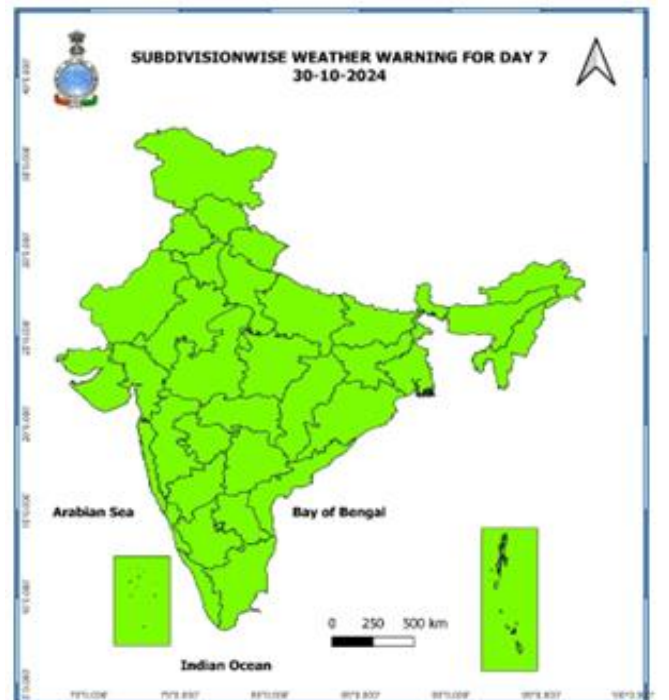
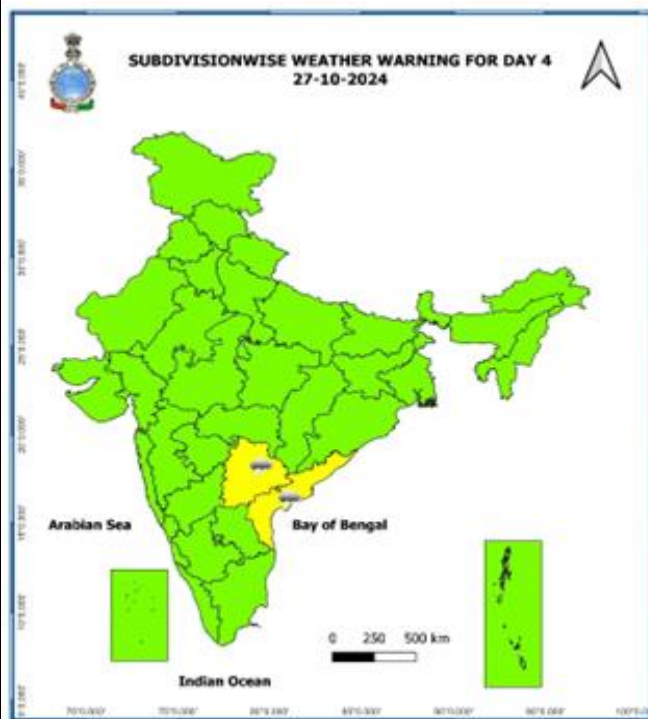
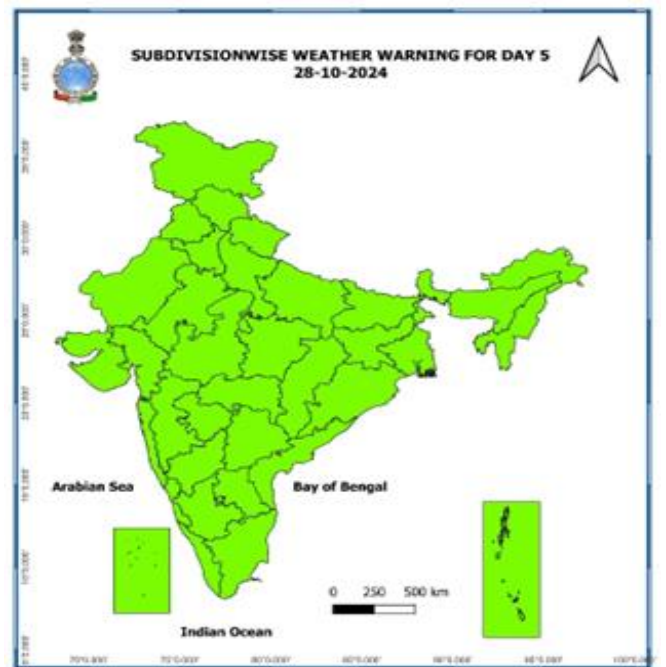
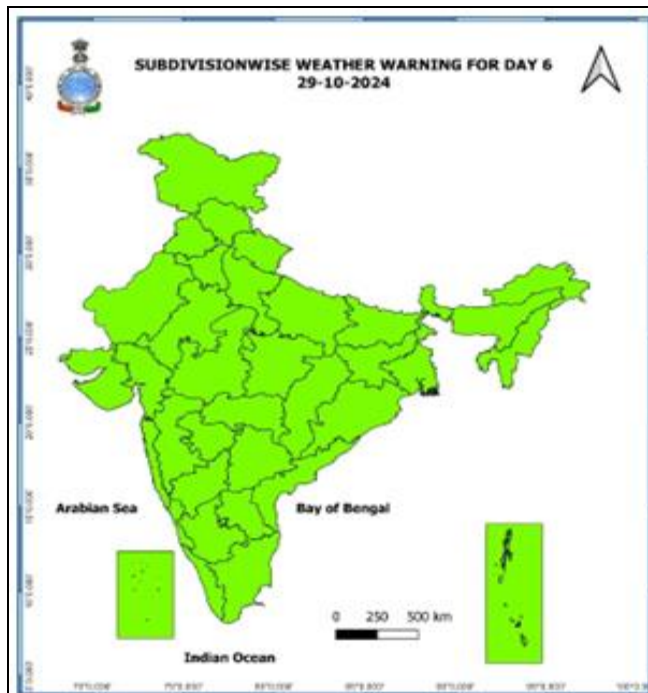
Alert (Be Prepared To Take Action)

Warning (Take Action)

Probabilistic Forecast

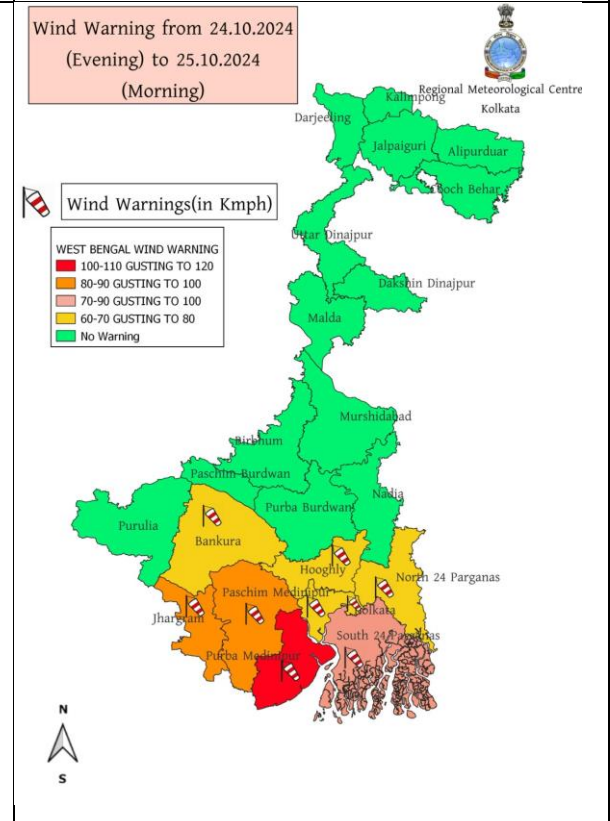
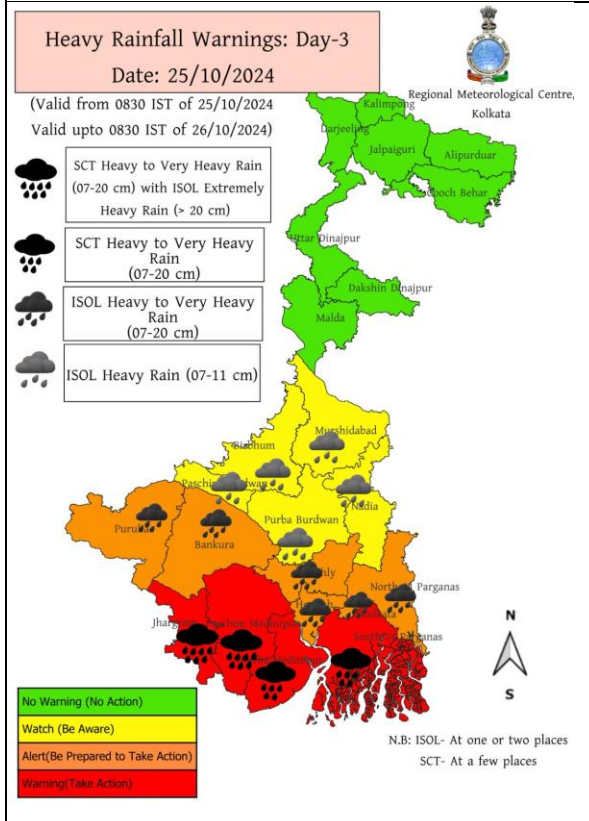
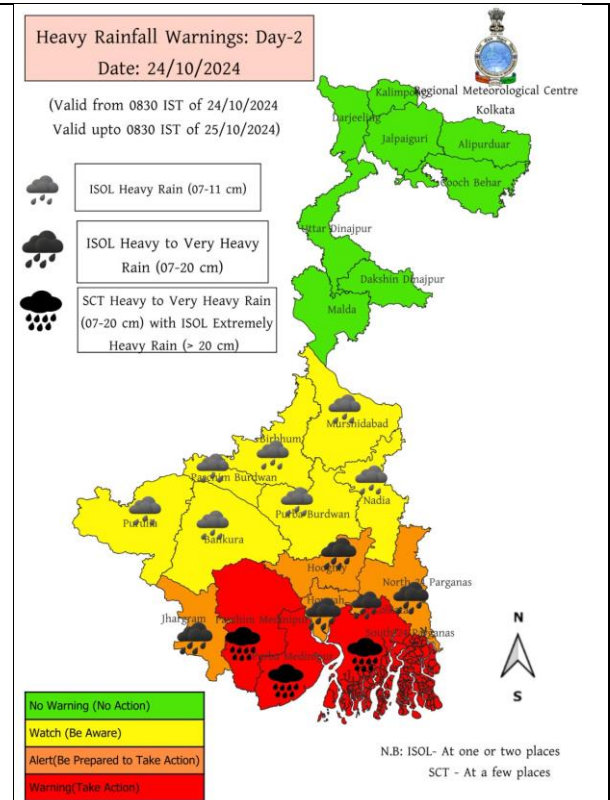
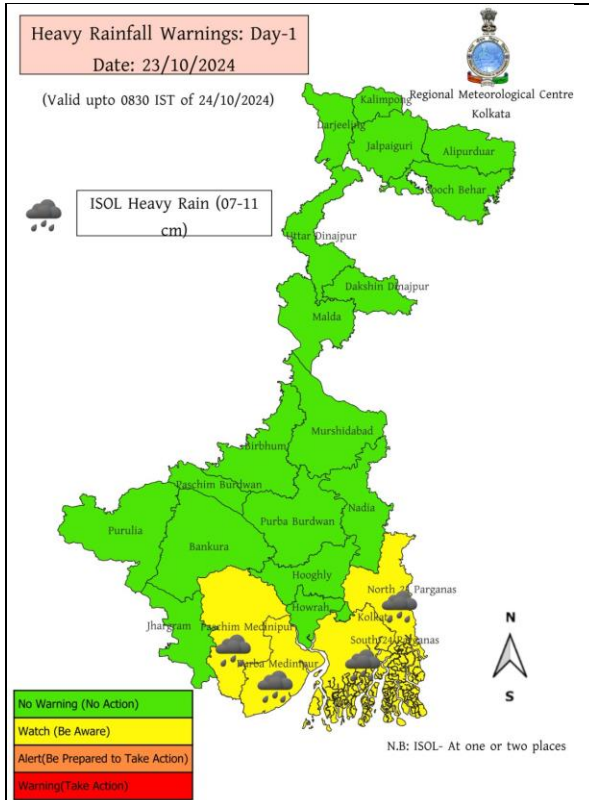
Terms	Probability of Occurrence (%)
Unlikely	< 25
Likely	25 - 50
Very Likely	50 - 75
Most Likely	> 75



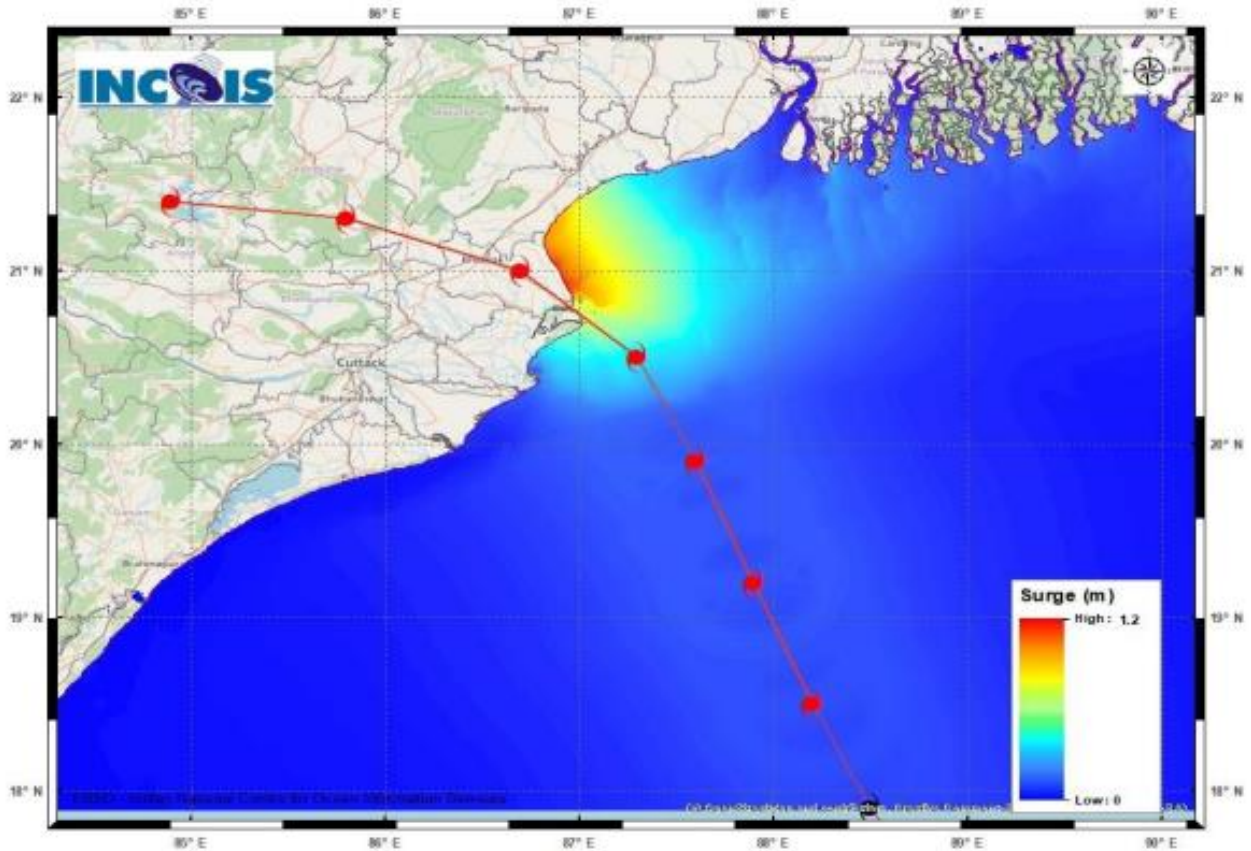


- Action may be taken based on **ORANGE AND RED** COLOUR warnings.
- Vulnerable regions likely urban and hilly areas action may be initiated for heavy rainfall warning.
- As the lead period increases forecast accuracy decreases.

District-wise Warning of West Bengal



Storm Surge warning graphics



DISTRICT	STATE / UNION TERRITORY	NEAREST PLACE OF HABITATION	STORM SURGE (m) *	EXPECTED INUNDATION EXTENT (km)
Baleshwar	Odisha	Kumbhigari	0.4-1.5	Upto 0.92
Bhadrak	Odisha	Mohanpur	0.8-1.5	Upto 0.82
Kendrapara	Odisha	Tikayat Nagar	0.2-1.0	Upto 3.01
Purba Medinipur	West Bengal	Dakshin Purushottampur	0.3-0.5	Upto 0.98
South 24 Parganas	West Bengal	Island	0.4-0.5	Upto 0.11

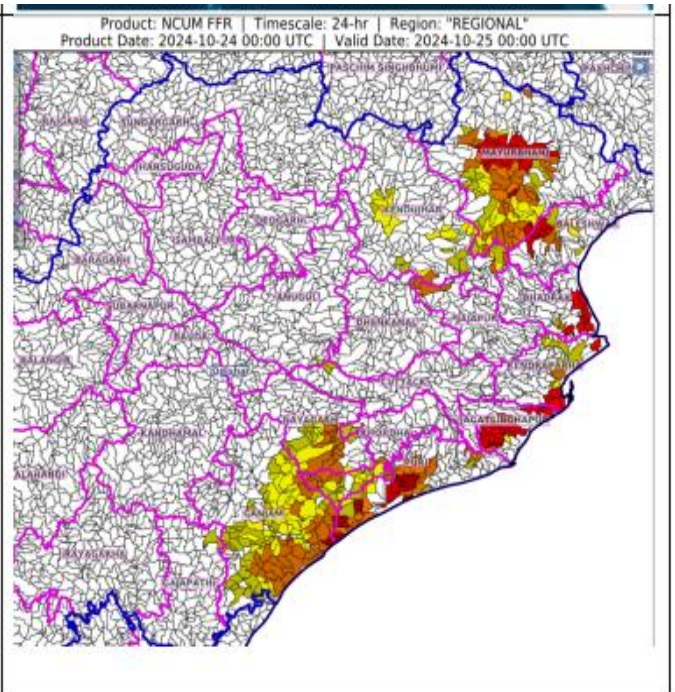
24 HOURS OUTLOOK FOR THE FLASH FLOOD RISK

24 hours Outlook for the Flash Flood Risk (FFR) till 0530 IST of 25-10-2024 :

Low to Moderate flash flood risk likely over few watersheds & neighbourhoods of following Met Sub-division during next 24 hours

Odisha - Baleshwar, Bhadrak, Gajapati, Ganjam, Jagatsinghapur, Jajapur, Kendraparha, Kendujhar, Khordha, Mayurbhanj, Nayagarh and Puri districts.

Surface runoff/ Inundation may occur at some fully saturated soils & low-lying areas over AoC as shown in map due to expected rainfall occurrence in next 24 hours.



Fishermen Warning Graphics

